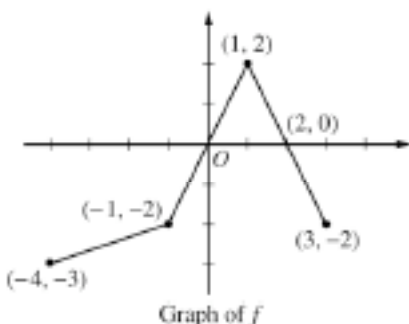


2007 AP[®] CALCULUS AB FREE-RESPONSE QUESTIONS

x	$f(x)$	$f'(x)$	$g(x)$	$g'(x)$
1	6	4	2	5
2	9	2	3	1
3	10	-4	4	2
4	-1	3	6	7

3. The functions f and g are differentiable for all real numbers, and g is strictly increasing. The table above gives values of the functions and their first derivatives at selected values of x . The function h is given by $h(x) = f(g(x)) - 6$.
- (a) Explain why there must be a value r for $1 < r < 3$ such that $h(r) = -5$.
- (b) Explain why there must be a value c for $1 < c < 3$ such that $h'(c) = -5$.
- (c) Let w be the function given by $w(x) = \int_1^{g(x)} f(t) dt$. Find the value of $w'(3)$.
- (d) If g^{-1} is the inverse function of g , write an equation for the line tangent to the graph of $y = g^{-1}(x)$ at $x = 2$.
-

2005 AP[®] CALCULUS BC FREE-RESPONSE QUESTIONS (Form B)

4. The graph of the function f above consists of three line segments.
- (a) Let g be the function given by $g(x) = \int_{-4}^x f(t) dt$. For each of $g(-1)$, $g'(-1)$, and $g''(-1)$, find the value or state that it does not exist.
- (b) For the function g defined in part (a), find the x -coordinate of each point of inflection of the graph of g on the open interval $-4 < x < 3$. Explain your reasoning.
- (c) Let h be the function given by $h(x) = \int_x^3 f(t) dt$. Find all values of x in the closed interval $-4 \leq x \leq 3$ for which $h(x) = 0$.
- (d) For the function h defined in part (c), find all intervals on which h is decreasing. Explain your reasoning.
-

2007 AP[®] CALCULUS AB FREE-RESPONSE QUESTIONS

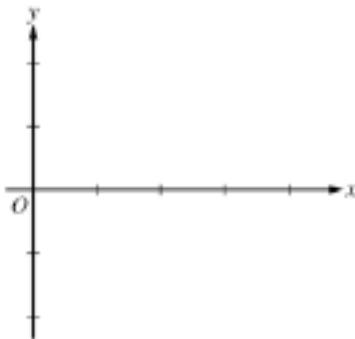
x	$f(x)$	$f'(x)$	$g(x)$	$g'(x)$
1	6	4	2	5
2	9	2	3	1
3	10	-4	4	2
4	-1	3	6	7

3. The functions f and g are differentiable for all real numbers, and g is strictly increasing. The table above gives values of the functions and their first derivatives at selected values of x . The function h is given by $h(x) = f(g(x)) - 6$.
- (a) Explain why there must be a value r for $1 < r < 3$ such that $h(r) = -5$.
- (b) Explain why there must be a value c for $1 < c < 3$ such that $h'(c) = -5$.
- (c) Let w be the function given by $w(x) = \int_1^{g(x)} f(t) dt$. Find the value of $w'(3)$.
- (d) If g^{-1} is the inverse function of g , write an equation for the line tangent to the graph of $y = g^{-1}(x)$ at $x = 2$.
-

2005 AP[®] CALCULUS AB FREE-RESPONSE QUESTIONS

x	0	$0 < x < 1$	1	$1 < x < 2$	2	$2 < x < 3$	3	$3 < x < 4$
$f(x)$	-1	Negative	0	Positive	2	Positive	0	Negative
$f'(x)$	4	Positive	0	Positive	DNE	Negative	-3	Negative
$f''(x)$	-2	Negative	0	Positive	DNE	Negative	0	Positive

4. Let f be a function that is continuous on the interval $[0, 4]$. The function f is twice differentiable except at $x = 2$. The function f and its derivatives have the properties indicated in the table above, where DNE indicates that the derivatives of f do not exist at $x = 2$.
- (a) For $0 < x < 4$, find all values of x at which f has a relative extremum. Determine whether f has a relative maximum or a relative minimum at each of these values. Justify your answer.
- (b) On the axes provided, sketch the graph of a function that has all the characteristics of f .
- (Note: Use the axes provided in the pink test booklet.)



- (c) Let g be the function defined by $g(x) = \int_1^x f(t) dt$ on the open interval $(0, 4)$. For $0 < x < 4$, find all values of x at which g has a relative extremum. Determine whether g has a relative maximum or a relative minimum at each of these values. Justify your answer.
- (d) For the function g defined in part (c), find all values of x , for $0 < x < 4$, at which the graph of g has a point of inflection. Justify your answer.
-